

Mechanical Controls

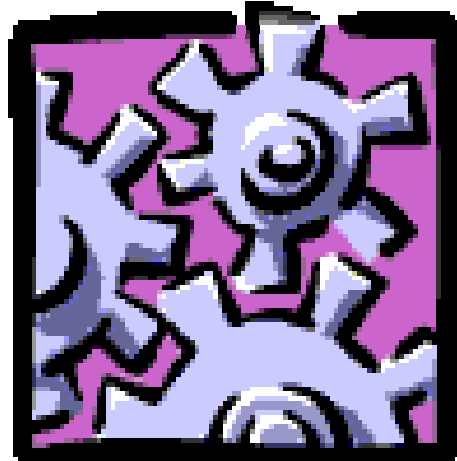
PowerPoint Toy Presentation

Design and create a PowerPoint presentation about the input, control, and output of the mechanical toy you have brought into class.

The presentation should include a number of slides sufficient to cover the below information.

Feel free to include any special element you would like (e.g. transition and build effects, digital images, digital video, etc.)

The presentation may be in either slideshow or interactive format.



The presentation must include the following information:

- Describe the input(s) of the toy in terms of the type of motion it is: linear, reciprocating, rotary, or oscillating.
- Describe the control system of the toy. Include a detailed description of the components of the system and how they interact. Answer the questions: What is inside that changes the input movement to the output movement? How is it accomplished?
- Describe the output(s) of the toy in terms of the type of motion it is: linear, reciprocating, rotary, or oscillating. Remember, each item may have more than one output movement even if there was only one input movement.