

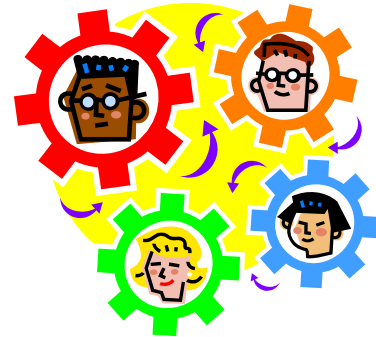
Mechanical Toys

Mechanical Control Design Activity

Situation

Sometimes even simple mechanically controlled toys can provide children with a high degree of entertainment value.

Design and make a working model of a mechanical toy that has at least one input and at least two output movements.



Resources

Time	15 class periods
People	Up to two per group
Energy	Human
Information	Suggested research topics: levers, linkages, simple machines, gears, cams, etc.
Money	None
Tools	None required
Materials	LEGOs
Space	No limitation

Other Criteria

- The toy must be safe for children to use.
- The toy must incorporate a theme.

Required

Documentation

The following must be handed in your design portfolio at the end of the activity:

1. Research sources and notes.
2. Design sketches, notes, and drawings from all group members.
3. Theme 'rendering' completed prior to building.